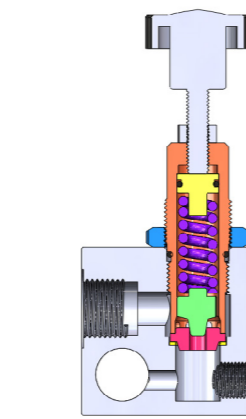


RELIEF VALVES



[CLICK HERE FOR 3D SECTION](#)

TECHNICAL FEATURES AND OPTIONS



Working Temperature
-20 °C / +80 °C



Flow Rate
Up to 50 l / min



Material
Aluminum



Operating Pressure
Up to 350 Bar



Available Threads
BSP

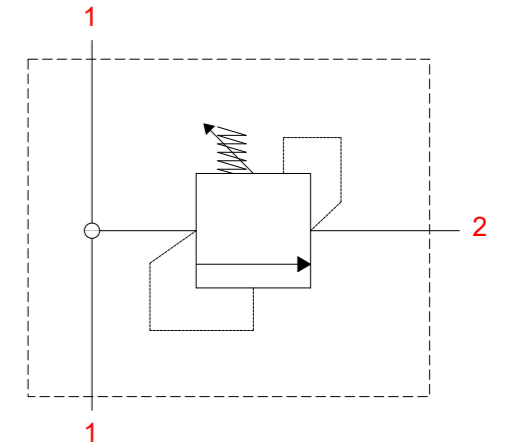
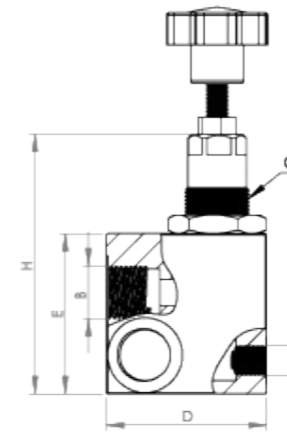


Available Sizes
From 1/2"



Sealing Description
NBR

TECHNICAL DRAWING



PRODUCT CODE	SIZE	WORKING PREASURE		Port A	Port B	Port C	G	D	E	F	H	WEIGHT	
		Mpa	psi					mm	mm	mm	mm	kg	lbs
PS-401	1/2"	41	5946	1/2"	1/2"	1/4"	M24x1.5	60	60	40	97,2	0,5	1,1

MAIN APPLICATIONS



OIL & GAS



AGRICULTURE



HYDRAULIC INDUSTRY



EARTH MOVING



HYDRAULIC EQUIPMENT



CONCRETE VEHICLES



VEHICLES



CHEMICAL INDUSTRY

INFORMATION

- PS401 Series Hydraulic Pressure Relief Valves act as a part of the control system in hydraulic systems.
- They are used to control and limit the pressure in hydraulic circuits.
- When the system gets overloaded, Pressure Relief Valve opens and redirects the excess flow back into the hydraulic reservoir, in order to keep the pressure constant.

WARNING

- Please do not expose to abnormal operating conditions. (E.g. oscillations, impulse pressures, water hammering, cavitation, and proportions of solid materials and abrasives)
- Please do not touch the valve, when the working temperature is lower than -20°C or higher than +50°C.
- Make sure the system pressure is below the maximum working pressure.
- Please ensure the cleanliness of all connection surfaces to avoid dirt or dust accumulation in the circuit.
- Please ensure the alignment and full connection of the assembly parts.
- Please ensure that the OLEOCON product you have chosen is compatible with the temperature, material and pressure requirements of your system.
- Please contact OLEOCON technical support for any further questions.